



MELLON IT & AI SOLUTIONS

MELLON - YOUR IT FRIEND

Mellon IT is a leading provider of advanced computer vision applications, specializing in edge device solutions and the latest techniques such as object detection and segmentation. Our innovative technologies enable real-time data analysis and insights, empowering businesses across diverse industries to enhance their operations, improve efficiency, and optimize decision-making. With Mellon IT, you can leverage cutting-edge computer vision capabilities to unlock the full potential of your visual data and stay ahead of the curve in today's data-driven world.

DATA LOSS PREVENTION (DLP)

Data Loss Prevention (DLP) solutions are security tools that help organizations to ensure that sensitive data such as Personally Identifiable Information (PII) or Intellectual Property (IP) does not get outside the corporate network or to a user without access. These solutions can identify, manage, and protect valuable business information and assets. By deploying a DLP software, companies can defend against data loss, theft, and exfiltration.

- Know Where Your Sensitive Data is and Who Has Access
- Categorize New Data with AI
- Provide Visibility to Your Network and Data
- Shield Against Insider and Outsider Threats and Data Misuse



EMAIL SECURITY SOLUTIONS

Email security solutions are designed to protect against phishing attacks and other email-borne attack vectors, protecting email accounts from external threats. Email security is the practice of protecting email accounts and communications from unauthorized access, loss, or compromise. Organizations can enhance their email security posture by establishing policies and using tools to protect against malicious threats such as malware, spam, and phishing attacks.

- Real Time Threat Protection
- Avoiding identity theft
- Communication confidentiality
- Spam & Phishing Protection
- Device access Control
- Identification Suspicious user behaviour



ENTERPRISE BACKUP SOLUTIONS

Enterprise backup and recovery software solutions are designed to capture a point-in-time copy (backup) of enterprise workloads in on-premises, hybrid, multicloud and SaaS environments and write the data to a secondary storage target for the purpose of recovering this data in case of loss. Backup and recovery solutions have several core capabilities.

- Efficiency and Control
- Security and Visibility
- Encryption Functionality
- Recovery Time Objective
- Recovery Orchestration
- Data Lifecycle Management



USER ACTIVITY MONITORING

User activity monitoring (UAM) solutions are software tools that monitor and track end user behavior on devices, networks, and other company-owned IT resources. Many organizations implement user activity monitoring tools to help detect and stop insider threats, whether unintentional or with malicious intent. The range of monitoring and methods utilized depends on the objectives of the company.

- Video recordings of sessions
- Log collection and analysis
- Network packet inspection
- Keystroke logging
- Kernel monitoring
- File/screenshot capturing.



CYBER DEFENCE & SECURITY SOLUTIONS

Cyber security solutions are technological tools and services that help protect organizations against cyber attacks, which can result in application downtime, theft of sensitive data, damage to reputation, compliance fines, and other adverse consequences. Antivirus and endpoint protection are insufficient to fight against new ransomware, zero-day exploits, and file less assaults. A cybersecurity platform allows businesses to consolidate visibility, analysis, and controls across security layers and workflows.

- Data safety from hackers
- Decreased data theft hazard.
- Handles data management.
- Deny unwanted access from the possible threat.
- Detection and deletion of unwanted and harmful programs



AMC SERVICES

Mellon is a highly qualified and competent IT service provider who is capable of maintaining IT infrastructure according to the clients' requirements. We will deliver unmatched IT Annual maintenance contract that helps you run your businesses run without interruption. Our company's comprehensive AMC proposal is created to improve and increase the lifespan of our client's assets, thereby allowing them to manage their business growth without any hindrances.



IT NETWORKS INFRASTRUCTURE

An efficient office is one with a good, secure, and reliable network. At Mellon, companies tap on our expertise to design, build and implement all forms of computer network infrastructure. Mellon delivers advanced technologies in areas such as secure Local Area Networks (LAN) / Wide Area Networks (WAN), wireless networks, and IP Telephony systems. Whether LAN or Data Centre, copper or fibre, factory terminated, or field terminated, structured cabling systems can maximize your network infrastructure with high performance, cost-effective, customizable solutions

SALLU EMS

Sallu EMS is a complete HR management and payroll processing software to maintain employee records, calculate payroll and creates WPS file (. Sif File) with automatic calculation of allowances & deduction etc in single click. This HR software can attach documents of employees along with each employee records to view them later when needed. One of the features of this HR software is document expiry reminders which helps the hr manager to renew the employee specific document like passport, visa, insurance or all other.



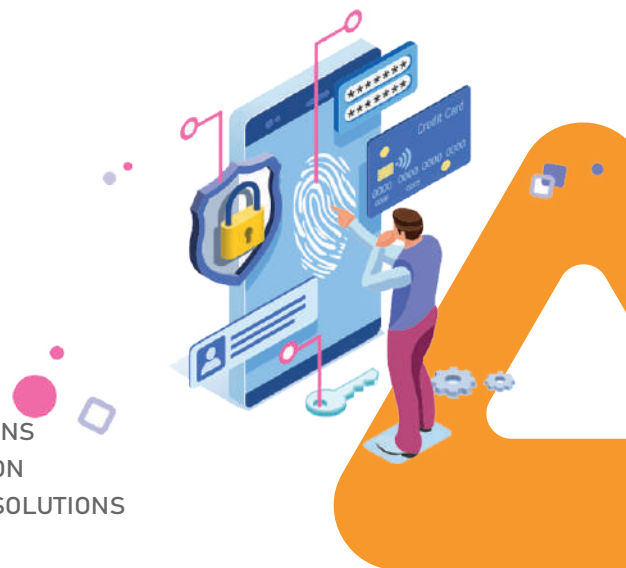
ACCOUNTING & ERP SOLUTIONS

A complete accounting system keeps track of an organization's assets, liabilities, revenues, and expenses. The systematic recording of these financial transactions enables the production of quarterly and annual financial statements, including balance sheets, income statements, statements of cash flows, and statements of stockholders' equity. Accounting software is a key component of an enterprise resource planning (ERP) system.



ACCESS CONTROL & TIME ATTENDANCE SYSTEM

A reliable Access Control Security System is not an option for businesses – it's a necessity. TAM Access Control provides security for your employees, visitors, buildings, and business equipment – and just as importantly – your data and company know-how. We consistently supply biometric fingerprint scanning, time clocking machines, attendance punching devices, palm vein reader, systems or machines with comprehensive attendance management software.



Other Services

- AI SOLUTIONS
- INTERNET SECURITY SOLUTIONS
- ANTIVIRUS/ FIREWALL SOLUTIONS
- SERVER SOLUTIONS
- IT CLOUD SERVICES
- DIGITAL INFRASTRUCTURE SOLUTIONS
- VIRTUAL PRIVATE NETWORK (VPN)
- DATA RECOVERY SOLUTIONS
- REMOTE ACCESS SOLUTION
- ACCOUNTING/ ERP/CRM SOLUTIONS
- STORAGE SOLUTIONS
- MANAGED IT SERVICES
- CCTV AND SECURITY CAMERAS
- DOCUMENT MANAGEMENT SYSTEM



Mellon Information Technology
Network Services L.L.C.

+971 2 639 7555 +971 50 991 7152 www.mellon.ae

Head Quarters
577, Rolling Hills
Waterloo, Ontario
Canada
hq@mellonit.com

Branch Office
5th Floor, Chakolas
Heights, Ernakulam
India
br@mellonit.com

Branch Office
Mussafah 40
Abu Dhabi
U.A.E.
mellon@mellon.ae

Branch Office
Abu Saif Business Center
Dubai
U.A.E.
mellon@mellon.ae